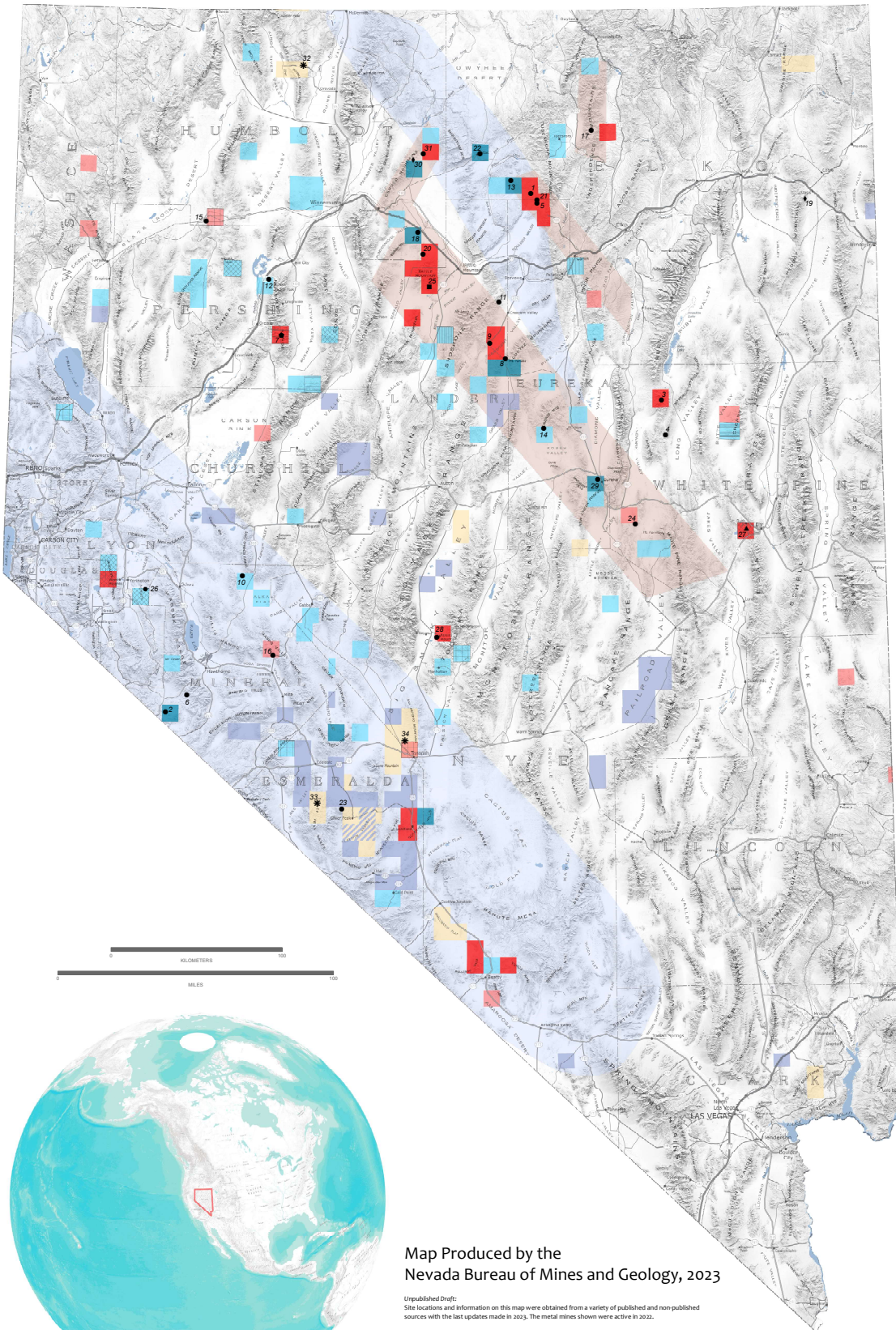


# EXPLORATION TRENDS AND MINERAL RESOURCES OF NEVADA



## Active Metal and Lithium Mines in 2022

### Mine Type

- Gold
- Gold, Copper, Silver
- Gold, Silver
- Silver, Gold
- Copper, Gold, Silver
- Copper, Gold, Moly, Silver
- \* Lithium

## 2022 Drill Projects (by township)

- Major Drill Program by a Major/Mid-Tier Company
- Minor Drill Program by a Major/Mid-Tier Company
- Major Drill Program by a Junior Company
- Minor Drill Program by a Junior Company

## Targeted Metal (other than gold)

- Silver
- Vanadium
- Copper
- Cobalt-Nickel
- Polymetallic Ag-Zn-Pb
- Polymetallic Au-Zn-Pb

## Lithium Projects (by township)

- Brine
- Sediment
- Brine-Sediment

## Mineral Trends

- Eocene gold trends
- Miocene precious-metal trends

## Mine Name

- 1 Arturo Mine Project (open pit)
- 2 Aurora Mine (reprocessing)
- 3 Bald Mountain Mine North Operations Area (open pit)
- 4 Bald Mountain Mine South Operations Area (open pit)
- 5 Betze-Post (open pit)
- 6 Borealis Mine (leach pad)
- 7 Coeur Rochester Mine (open pit)
- 8 Cortez Hills (underground mine)
- 9 Cortez Pipeline Mine (open pit)
- 10 Denton-Rawhide Mine (open pit)
- 11 Fire Creek Mine (underground mine)
- 12 Florida Canyon Mine (open pit)
- 13 Hollister Mine (underground mine)
- 14 Gold Bar Mine (open pit)
- 15 Hycroft Mine (open pit)
- 16 Isabella Pearl Mine (open pit)
- 17 Jerritt Canyon Mine (underground mine)
- 18 Lone Tree Complex (leach pad)
- 19 Long Canyon Mine (open pit)
- 20 Marigold Mine (open pit)
- 21 Meikle Mine (underground mine)
- 22 Midas Mine (underground mine)
- 23 Mineral Ridge Mine (leach pad)
- 24 Pan Mine (open pit)
- 25 Phoenix Mine (open pit)
- 26 Pumpkin Hollow Mine (underground)
- 27 Robinson Mine (open pit)
- 28 Round Mountain Mine (open pit)
- 29 Ruby Hill Mine (leach pad)
- 30 Turquoise Ridge Joint Venture (underground mine)
- 31 Twin Creeks Mine (open pit, underground mine)
- 32 Thacker Pass
- 33 Rhyolite Ridge
- 34 TLC

Map Produced by the Nevada Bureau of Mines and Geology, 2023

Unpublished Draft:  
Site locations and information on this map were obtained from a variety of published and non-published sources with the last updates made in 2023. The metal mines shown were active in 2022.

The mine site locations shown on this map represent the main open pit or portal location and are accurate for a display scale of 1:1,000,000 or smaller.

Mineral trends are modified from NBMG Open File Report 03-2, Nevada Mineral Trends.

Active metal mines, drill projects, and targeted metals are from the Nevada Mineral Industry Report 2022.